

March 2018

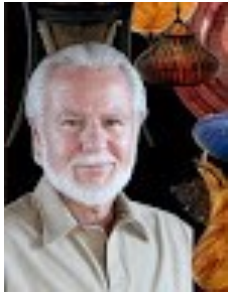
WWW.OVWG.ORG

A Chapter of the American Association of Woodturners

www.woodturner.org

John Keeton

March 17, 2018



“Growing up in rural eastern Kentucky, I spent most of my free time in the woods. That was well before deer and elk had been restored to that area, but I knew the location of every squirrel den tree!

My first woodworking was done with a pocket knife and whatever crude handtools I was able to find. In the early 1970s, I began building longrifles using handtools for nearly all of the work.

Eventually, my woodworking expanded to furniture, often using my favorite woods of white oak, walnut and curly maple. Most of my work revealed the influence of Shaker furniture.

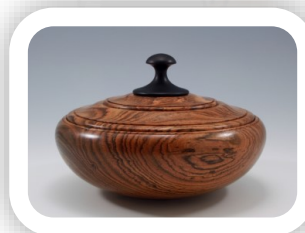
Soon, however, I felt constrained by the building of casework. The need for artistic expression left me searching for more! My first woodturning was a set of walnut legs for an occasional table. That led to a few bowls, and ultimately to more-refined art pieces and cremation urns. I now sell my work in several regional galleries as well as funeral homes.”

John is like a kid in a candy store, he wants to try everything he sees! He admits to a short attention span and his wide range of work backs this up.

John is a member of the American Association of Woodturners, a juried and exhibiting member of the Kentucky Guild of Artists and Craftsmen and adjudicated artist with the KY Arts Council.

What's Inside

President's Letter	2-3
Upcoming Events	3
Educational Opportunities	3
Jennifer Shirley Demo	4-5
Election/Scholarships/More	6
AAW Information	7
Show and Tell	8-9
Board and Mentors	10



Check out the website Events Calendar for all upcoming activities at the Learning Center

President's Letter



While it is still a little chilly outside, the beautiful sunshine and the blooming daffodils are indications that spring is on the way. In fact by the time you read this it will probably be less than two weeks away. This is always an exciting time of the year as trees, shrubs, and other flowering plants put on a show of color that highlights the beauty of our natural world. It can also be a great time of the year to collect some good wood for turning as many home owners, cities, businesses, etc. have trees trimmed. So, keep your ears open for the sounds of chain saws and don't be shy about asking for some of the wood. They are often happy to have you haul it away.

While spring is always a time of renewal for nature, it is also time of renewed activity and growth for the Ohio Valley Woodturners Guild. In addition to the usual happenings (monthly meetings, open shops, hands on classes, three-day classes, etc.) we are making plans to participate in other events. These will include such activities as the Appalachian Festival (May 11-13), Youth Turning Summer Camp in late June, and the provision of a turning class in the University of Cincinnati's Osher Lifelong Learning Institute (OLLI) during the summer. All of these events are dependent on the participation of our members. If you can help I urge you think about how you might be able to contribute and contact the individuals in charge to find out what is needed. The contacts are Mary Carol Meinken and David Wright for the Appalachian Festival; Bev Connelly for the Youth Turning Summer Camp; and John Jackobs and David Wright for OLLI. I also want to mention that David Wright has taken over as Director of Community Relations - a Board position he will continue after his term as Secretary ends. Please refer any potential community related events directly to him for consideration.

Another spring event for the Guild is the election of officers. Our By-Laws specify the following: "Terms of office shall be staggered to enhance continuity. The President and Vice President of Programming shall be elected in odd numbered years; the Vice President of Facilities and Equipment, Treasurer, and Secretary in even numbered years. Officers shall be elected by a majority vote of those members casting ballots at a scheduled meeting or who have sent written ballots to be opened at such meeting. Elections shall have been announced at the preceding meeting and through an advance communication to the membership. Elections shall normally be held in April and newly elected officers shall assume office at the September meeting or whatever regular meeting follows the summer break." With this being an even numbered year we will be electing the Vice President of Facilities and Equipment, Treasurer, and Secretary. Ron Hanssen (VP of Facilities & Equipment) and Kurt Foglesong (Treasurer) have announced that they will be seeking re-election. David Wright has decided that 6 years as secretary is long enough and will not seek re-election. Anyone interested in being nominated should contact KC Kendall in his role as Chair of the Nomination Committee.

Since the opening of the Learning Center, we have attempted to provide you with opportunities to learn how to turn if you are just beginning or to improve your turning skills if you already have some experience. A quick look at the event calendar will give you an overview of all the activities that are readily available to you in the next few months. If you are a new member and just starting to turn there are two "Introduction to Woodturning and the OVWG" classes in March. Once you have this introduction you can then take a series of turn and learn classes offered throughout the month. For those who are on your way with turning there are many "Open Shop" session where you can come to work on improving your skills under the watchful eye of an Open Shop Coordinator. And to top it off, you can take hands-on (one day) and three-day classes with a professional - Graeme Priddle in April and Harvey Meyer in May. I encourage you to take advantage of as many of these great opportunities as your schedule will allow.

I want to remind you that the OVWG is a chapter of the American Association of Woodturners (AAW) - an international organization with over 15,000 members. As an OVWG member (who has never

been a member of the AAW) you may have a three month introductory membership for only \$20. Why should you join? AAW membership gives you access to a wide variety of benefits that you will find very helpful. This is especially true if you are relatively new to turning, and as an experienced turner I am certain that you will find many things in the magazine and elsewhere that will help you to improve your skills. This trial membership gives you access to American Woodturner (magazine), Woodturning FUNDamentals, AAW EXPLORE!, Discover Woodturning, AAW Connects, AAW Forum, tips library, safety resources, learning and mentoring materials, AAW video source, grant opportunities, specialty programming, services, and more. After the three month trial is over you may sign up for the additional 9 months for only \$40 if you like. Check out the AAW website for more details (www.woodturner.org).

I will close by thanking you for your continued membership in the OVWG and invite you to bring guests and/or potential members with you to our March meeting.

Jerry Warner,
President

Upcoming/Ongoing Events

Mar 17, 2018	John Keeton - johnkeeton.com
Apr 21, 2018	Graeme Priddle - graemepriddle.com
Apr 23-25, 2018	Graeme Priddle - Three Day Class
May 19, 2018	Harvey Meyer - harveymeyer.com
May 21-23, 2018	Harvey Meyer - Three Day Class
Jun 16, 2018	Zeller Memorial Picnic

Educational Opportunities

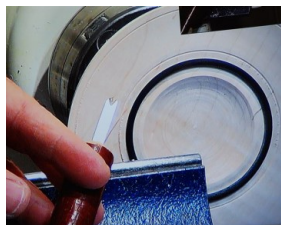
Plan on taking advantage of the many opportunities to learn from a professional woodturner right here in our Learning Center - Mar 18, John Keeton Hands On - Apr 22, Graeme Priddle Hands-On - Apr 23-25, Graeme Priddle three day class - May 20, Harvey Meyer, Hands On - May 21-23, Harvey Meyer three day class

Things of Note

- OVWG name tags with a magnetic back are available for \$5 from member Chris Barrett. To get a name tag, send Chris an email at artisan022@icloud.com, telling him how you want your name to appear. He will have your name tag at a subsequent meeting.
- The OVWG now has **business cards** printed and available for members to be given out and posted at related wood turning businesses. The cards are available in the Learning Center.
- We continue to have opportunities to do demos in many different locales. We have an "approved demonstrator" list that receives an email with a chance to volunteer for demo events. If you would like to be on the approved demonstrator list, please contact Jerry Warner.

The February meeting featured Jennifer Shirley who lives and works near Indianapolis. She is a frequent demonstrator at regional and national woodturning guilds and symposiums and teaches at many craft schools around the country. Her demonstration at the February meeting focused on many different types of embellishment of turned objects. She stated at the outset that she wanted to “fill our pockets” with many different types, styles, and methods of enhancing turned objects. Her approach to turning starts with an idea obtained from something she has seen. Everyday objects, patterns, etc. and then begins with a sketch which is more about what to do with the turned object than its form.

She started by turning a simple dish with a beaded rim. The technique was used to illustrate that the beaded rim could be painted on the lathe and once dry, the excess paint could be turned away to form a clean, perfectly decorated rim. She used an

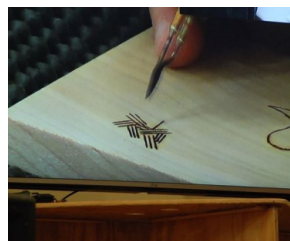


acrylic, water based medium called “Black Gesso” because it would not tend to soak in like dyes or stains. Gesso is used as a primer by artists and tends to cover the surface without

penetrating the wood fibers. The product is available in black, white, and grey. The technique was not limited to beading and can be used on any bead, cove or pattern that is turned.

Wood Burning

Turning her attention to woodburning, she stated her preference for the Burnmaster woodburning unit by Master carver and for fixed tip burning pens by Optima. She prefers this unit and pens for durability. The many types of tips that she demonstrated included ball tip, calligraphy tip, handwriting tip, and circle stamps. There are several different styles and types of woodburning pen tips to choose from and she spent some time demonstrating the different tips and their uses starting with the skew (or micro skew). This tip is used for



drawing curves or straight lines that are sharp and clearly defined. It is used in much the same way that you would use any drawing instrument. Ball tips can form thick lines or dot patterns. Pen tips are slightly more difficult to use and require more practice. Experimentation on blank scrap wood is the best way to gain a feel for how the various tip produce a burned image. For those



on a budget or those who wish to create their own woodburning pens and tips, both Colwood and Mastercarver sell woodburning pen handpieces and nichrome wire (16-20 gage) to form your own distinctive wood burned designs.

A good place to start for simple, easy to replicate designs and patterns for beginners is Pinterest. www.pinterest.com and search for woodburning patterns. After creating a pattern or downloading one, an image can be transferred to the workpiece with graphite paper. On her scrap wood pieces, she

demonstrated a combination of heat and style of tip to control the shading, depth and intensity of the burned lines, dots, shading, etc., to match the desired pattern that was sketched out (or copied). Using burning tips such as ball



tip, shading and skew tips, the beginner is advised to start by using various different tips, lightly touching the surface before applying more pressure. Learn what the tips will do and how intensely it will burn using a methodical, trial-and-error approach. She suggested the use of creating a storyboard to record various tips and heat settings and techniques as a ready reference to use as your woodburning skills progress. Finally, she covered an unusual method of woodburning:

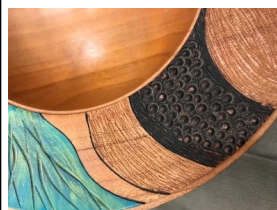
Turning a piece of open grained wood such as Ash, and burning the piece with a propane torch to reveal deep crevices between the annual growth rings that can then be filled with tile grout of an appropriate contrasting color to give a very distinctive look!



Adding Color to Wood Burning

After the morning break, she introduced a method of burning a pattern into the turned object, and then using Fiebing's black leather dye to color a piece and then sealing the black dye with Deft clear wood finish

(Lacquer) and then filling the woodburned areas with Liquitex modelling paste. The results are quite stunning. She noted that the Liquitex can be tinted to a variety of colors,



but she advised against using poor quality acrylic colors in the tinting process. Care must be taken when clearing the excess so that it is not pulled out of the burned areas. Therefore, the burned

patterns must be deep enough to catch and hold the modelling paste. Thin lines will produce better results than thick lines. Woodburning can also be complimented with a variety of wood coloring products that she prefers including Staedtler, Copic, and wood/leather dyes. Burning is done prior to coloring because the burned lines form color barriers. Be careful not to choose a coating that will make the colors run or bleed together.



Wood carving

Using a scrap piece of cherry, Jennifer demonstrated the use of various ball tip burrs and cutters to create various textures, dimples, grooves and rough patterns that can be used to embellish your work. Color and texture can be combined to great effect. The most cost effective way to begin experimenting with power carving is to



buy a Dremel carving tool and a few bits and begin to experiment. Another way of adding texture is to use a handheld engraver. An engraver uses an oscillating (vibrating) diamond pointed stylus and very rapidly

makes impressions in the wood wherever the point is directed on the surface. There are variables such as the hardness of the wood, grain pattern, etc., that will cause the results to vary. Some woods will produce better results than others.

Other Methods

There are more ways to add texture than wood burning or carving. Jennifer showed several examples of textures that were done using thick, acrylic mediums that have sand, grit, thick paste, or other additives to give the surface texture without and other effort needed. Michaels and other craft stores will have sample boards of their acrylic based products that can be adapted to give surface texture. Stencils may be used that are cut from sign making vinyl and then adhered to the workpiece. The exposed areas can then be filled with whatever acrylic medium that you choose. Overall the demonstration left most of the group with a lot of options to explore. If you are not sure about giving woodburning a try, our own Mary Carol Meinken hosts the pyrography group meeting at the Kennedy Heights Learning Center on the last Wednesday of each month from 6:30-9:00PM. Happy Turning!



Resources

Learning and exploring Zentangle <https://zentangle.com/>

Mastercarver Burnmaster: <http://www.woodcarverssupply.com/>

Staedtler Marking Pens: <http://shop.staedtler.us/>

Optima woodburning pens: <https://www.turtlefeathers.net/>

Woodburning patterns: <http://jwww.pinterest.com/>

Liquitex modelling paste: www.dickblick.com

Craft Supplies USA Power Carving tools and accessories: <https://www.woodturnerscatalog.com/>

Carving bits and burrs: <https://www.riogrande.com/>

Carving motors, bits, and burrs: <http://www.jpaulfennell.com/Tools.html>



Appalachian Festival

May 11-13, 2018



OVWG will once again be participating in the Appalachian Festival conducted at Coney Island. Put it on your calendar and start preparing to take part in this great community outreach program.

Please contact Mary Carol Meinken or David Wright if you are interested in having a booth or helping out with demonstrations.

SCHOLARSHIPS

DID YOU MISS OUT??? NINE MEMBERS FROM OUR CLUB APPLIED FOR AND RECEIVED SCHOLARSHIPS TO ATTEND CLASSES AT THE LEARNING CENTER. AWARDS RANGED FROM \$125 TO \$375 AND CAN BE USED FOR A VARIETY OF CLASSES.

ELECTIONS

Elections will be held in the month of April for three Board Member positions. The three positions are: Vice President of Equipment and Facilities, Treasurer and Secretary. The incumbents for Vice President of Facilities and Equipment and Treasurer are seeking re-election but candidates are needed for the Secretary position. If you are interested in the Secretary position please contact KC Kendall.



Two day class with Robin Costelle



Tips and Information from the AAW



TOTAL EXPERIENCE 
AAW and chapters together serving members since 1986.

Use the link below to access AAW's video tip -
John Beaver on photography

[Video Link](#)

AAW | AMERICAN ASSOCIATION
OF WOODTURNERS

**NEVER BEEN AN
AAW MEMBER?**

THREE-MONTH INTRODUCTORY AAW MEMBERSHIP

JUST \$20

Each introductory, three-month AAW membership includes the benefits of AAW membership for three full months, including: one printed copy of the *American Woodturner* journal, and access for three-months to Woodturning FUNdamentals, AAW EXPLORE! Discover Woodturning, AAW Connects, AAW Forum, tips library, safety resources, learning and mentoring materials, grant opportunities, specialty programming, services, and more.

* Available to new members one time only. When the introductory three-month membership period ends, individuals who have not cancelled are automatically renewed for an additional nine-month period for just \$40.

 **SIGN UP**
<http://tiny.cc/ITM2040>

Visit us at woodturner.org

AAW MEMBERSHIP FOR JUST \$20

FOR JUST \$20, individuals who have NEVER been AAW members may sign up for a three-month introductory membership. When the introductory three-month membership period ends, individuals who have not cancelled are automatically renewed for an additional nine-month period for just \$40. The introductory three-month membership offer is available to individuals **ONE TIME ONLY**.

Each introductory, three-month AAW membership includes the benefits of AAW membership for three full months, including: one printed copy of the *American Woodturner* journal, and access for three-months to Woodturning FUNdamentals, AAW EXPLORE! Discover Woodturning, AAW Connects, AAW Forum, tips library, safety resources, learning and mentoring materials, grant opportunities, specialty programming, services, and more.

TIP TO SHARE

from Kip Christensen



"Good technique takes time. In teaching woodturners, both young and old, I have found that - like me learning the trumpet - beginning woodturners are often impatient and unrealistic. They expect to create beautiful work without spending time developing the fundamentals. In woodturning, it is impossible to create functional and even beautiful objects without spending long hours practicing basic skills." Kip will be a demonstrator at the [AAW Symposium in Portland](#), June 14-17, 2018. See his demonstration on spindle turning and hear his perspective on the value of practicing foundational skills.

February Show and Tell

Robert Tuemler



Maple/Ebony HF

O'Neal Johnston



Maple NE Footed Bowl

O'Neal Johnston



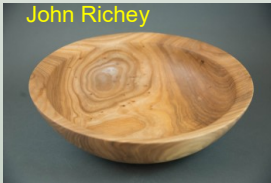
Maple Hat

Nancy Bowman



Kaleidoscope

John Richey



Elm Bowl

Curly Oak HF



Ron Cruze

Mike Pankion



African Vase

John Shannon



Wooden Candy Apples

Mike Pankion



Maple Leaf Plate

Johnny Bowman



Cherry Hollow Form

O'Neal Johnston



Walnut Bowl

Kaleidoscope



Nancy Bowman

Mike Pankion



Spalted Buckeye

Nancy Bowman



Kaleidoscope

KC Kendall



Cherry Bowl

John Peter



Platter

Nancy Bowman



Kaleidoscope

KC Kendall



Oak Platter

Robert Tuemler



Birdseye Maple Flask

Mike Pankion



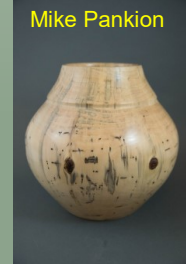
Norfolk Island Pine

Don Stephen



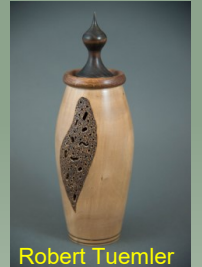
Ash Box

Mike Pankion



Norfolk Island Pine

Bradford Pear HF



Robert Tuemler

John Peter



Platter

Curly Maple Platter



KC Kendall

Dick Manteuffel



Honeysuckle Bowl

Mike Pankion



Ambrosia Sycamore

Johnny Bowman



Oak/Bloodwood

Clock



John Peter

Bev Connelly



Poplar Stool

John Jackobs



Cherry/Walnut

John Jackobs



Osage Orange

Cindy Cwi



Mahogany / Copper

Cindy Cwi



Mahogany / Copper

Jess Parrett



Sycamore/Walnut/Paduk

Bev Connelly



Sycamore Tea Light

Platter



John Peter

Dick Manteuffel



Heart Ornaments

David Wright



Curly Maple Bowl

Jess Parrett



Purpleheart/Maple

Cindy Cwi



Mahogany / Copper

Don Stephen



Walnut Box

Cindy Cwi



Mahogany / Copper

Don Stephen



Basswood Box

Johnny Bowman



Cherry HF

Dick Manteuffel



Cherry Burl

Mike Pankion



Spalted Buckeye

Dean Duval



Paowood

John Glessner



Oak / Epoxy Clay

Jess Parrett



Maple/Sycamore/

David Wright



Ash/African Blackwood

Jess Parrett



Maple / Paduk



Rockler in Tri-County
333 E. Kemper Rd., 513-671-7711
All OVWG members receive **10% off** all purchases (except Festool & SawStop)



Woodworking Machinery
Tooling and Supplies

Hank Lynch
Store Manager &
Outside Sales

Edward B. Mueller Company Inc.
101 East Benson Street
Cincinnati, Ohio 45215
Cincinnati: (513) 761-6777
1-800-642-5656 Ext. 312
Retail Fax: (513) 761-9945
Cell: (513) 207-5531
Email: hank.lynch@muellerco.com
Website: www.muellerco.com

ANCHORSEAL

\$12 / gallon. This green wood end-sealer is available in 1 or 5 gallon containers.

EXOTIC WOODS

BIG MONK LUMBER CO. Turning squares and bowl blanks. Afata to Zebrano

www.bigmonklumber.com

Call or email for price list and be sure to stop by the table at a meeting.

Contact: **Pete Kekel**

859-653-3520

2ndnature@fuse.net



WOODCRAFT
Helping You Make Wood Work

513-407-8371

11711 Princeton Plaza, Suite 271
Near Tri-County Mall

SANDING SUPPLIES

Available in All Grits. Yellow, Green, Blue, White. Abralon. Scotchbrite. Mandrels. Interface Pads.

Any size. Any shape.

Round, Wavy, Belts, Detail Sanding.

Jon Hornbach 513-702-2427

WoodyMcSander@gmail.com



copyright © 2018

Ohio Valley Woodturners Guild

Newsletter Editor David Wright

7203 Timbernoll Drive

OVWG Board of Directors

Elected Officers

President:
859-442-0410

Jerry Warner
jw.warner455@gmail.com

Past President:
513-755-8856

KC Kendall
kckendall@cinci.rr.com

VP of Facilities and Equipment
859-689-5136

Ron Hanssen
rcflyer1954@yahoo.com

VP of Programs
937-239-1980

Nancy Bowman
sgolf11@msn.com

Treasurer:
859-356-3281

Kurt Foglesong
jfoglesong@fuse.net

Secretary:
513-805-8335

David Wright
davidwright@fuse.net

Appointed Positions

Director of Youth Turning:
513-321-2804

Bev Connelly
blcnclm@fuse.net

Director of Skill Development:
513-325-9002

John Albachten
albachj@ucmail.uc.edu

Director of New Member Development:
513-755-8856

KC Kendall
kckendall@cinci.rr.com

Director of Community Development:
513-805-8335

David Wright
davidwright@fuse.net

Director of Marketing
513-678-4518

Jack Gormley
jgormley@fuse.net

OVWG Mentors

Do you need help getting started or working out a problem? Call any of the names listed below. As always, there is **NO CHARGE** to members of the Ohio Valley Woodturners Guild. We love to share our woodturning passion. Call us, we want to help you.

Central:	Dave Morrical	513-771-5205
	John Albachten	513-325-9002
	Mary Carol Meinken	513-521-1517
	Dave Kratzer	513-290-9609
Highland County	Nancy Bowman	937-239-1980
Loveland:	John Lannom	513-683-3129
North Side:	K.C. Kendall	513-755-8856
West Chester:	Mike Pankion	513-777-5599
East Side:	Gary Brackett	513-553-7474
Dayton:	Jim Burrowes	937-371-9426
	Lowell Converse	937-426-2646
	René Keyzer-André	937-277-4717
	Gary Vance	937-667-4520

Tipp City		
Kentucky:		
N. Kentucky	Kurt Foglesong	859-356-3281
Kenton Cnty:	Pete Kekel	859-653-3520
Campbell Cnty:	Keith Bundy	859-781-5414

Indiana:

Southeast: **Gerald Williams** **812-689-6545**

Contact: KC Kendall, Mentoring Chairperson, with any changes or if you'd like to join these talented volunteers.

Meetings

Demonstration meetings are generally held the third Saturday of the month (September through June) from 9:00am to 3:00pm. Registration and set up starts at 8:00am. Meeting cost, (starting in January 2018 - includes lunch) is \$15 for members and \$25 for nonmembers for all demonstrators. Attendees who are a member of another woodturning club will pay our member rate of \$15. Annual membership dues are \$45 for the first year (includes name badge) and \$40 for renewal, payable upon joining.