



# OHIO VALLEY WOODTURNERS

September 2017

[WWW.OVWG.ORG](http://WWW.OVWG.ORG)

A Chapter of the American Association of Woodturners

[www.woodturner.org](http://www.woodturner.org)

## Kimberly Winkle September 16, 2017



Kimberly is a maker who creates furniture and objects using wood and paint. Her work displays a balance of form, color and surface pattern. She has exhibited nationally and internationally and her work has been included in a number of publications, including *Fine Woodworking*, *Woodworker*, and *Woodworker West* magazines. Kimberly has completed several artist residencies, including the International Turning Exchange at the Center for Art in Wood in Philadelphia, the Windgate Artist Residency at State University New York (SUNY) Purchase, Haystack Mountain School of Crafts and at the Appalachian Center for Craft. She has been awarded four Niche awards, a State of Tennessee Individual Artist Award in 2011 and the Society of Arts and Crafts (Boston) John D. Mineck furniture fellowship in 2014.



## What's Inside

President's Letter	2-3
Upcoming Events	3
AAW Information	4
Picnic Pictures	5
Meet the Turner	6
June Contest	7
Show and Tell	8
Symposium / Notes	9
Board and Mentors	10

Kimberly is an Associate Professor of Art at Tennessee Technological University. She holds a Bachelor of Fine Art in Ceramics from the University of Oklahoma and a Master of Fine Art in Furniture Design from San Diego State University. Her workshop teaching experience includes, Arrowmont School of Arts and Crafts, Anderson Ranch Art Center, The Center for Furniture Craftsmanship, John C. Campbell Folk School and the Appalachian Center for Craft.

**"I have intentionally simplified the forms of my furniture, so that it is the designs themselves that are the central focus."**

Kimberly's wood bowls and mirrors are explorations of her current focus on the scrutiny of form, color and line. Within these parameters, she works with the basic arrangement of the dot and line. She has combined these two elementary marks, and views the end result as an exciting and somewhat quirky dialogue of characters.



Check out the website Events Calendar for all upcoming activities at the Learning Center

# President's Letter



Welcome to the 2017-18 Turning Year. As in past years, I expect it to be a great one for the Ohio Valley Woodturners Guild and encourage you to make plans to be a part of it. My comments below are an attempt to remind you of the accomplishments of the past few years, outline ways in which you may work with us to make the OVWG even stronger and better in future years, and to update you on other activities.

On August 31, 2017, I completed my first term as President of the Ohio Valley Woodturners Guild. This has been an exciting two-year period during which the Guild has experienced tremendous change and significant growth in membership (329 as I write). The start of my presidency in September 2015, was marked by a move to the newly renovated Lindner Annex of the Kennedy Heights Arts Center where we opened the Learning Center (LC) and began to use the large meeting room for our monthly meetings. This initiative was begun during the presidency of KC Kendall who provided the vision and leadership to bring it to fruition. His work, a supportive and innovative Board, and the contributions of many dedicated volunteers have made this facility the envy of all non OVWG woodturners who have seen and experienced it.

We had great expectations of what the LC would mean for the Guild and I am happy to say that these expectations have been exceeded. Prior to this move we were limited to monthly meetings where professional turners and some members provided demonstrations, to hands-on classes by professionals, and to occasional events where demonstrations were presented to the public. The LC resulted in major additions to the services that we provide to members. These include but are not limited to basic classes on woodturning for new members, pen turning sessions, classes on topics such as peppermills, hands-on and 3-day classes by professionals, and week-long summer camps for kids. As I begin my second term as President, I am confident that use and development of the LC will continue to improve.

In an effort to fully develop the potential of the LC and to enhance other aspects of the Guild, the Board appointed a Strategic Planning Committee and tasked it to produce a five-year Strategic Plan. After several months of work a plan was presented to the Board in the of Spring 2017. It has since been approved by the membership and is now available on the OVWG website. This plan includes a reorganization of the Board of Directors. Temporary Positions that were included before have now been eliminated and all positions are either elected by the membership or are appointed by the President with advice and consent of the Executive Committee.

This is the time of year when the Board usually undergoes some changes. This year is no different. As of August 31, 2017: Dave Kratzer, John Shannon, John Richey, Ian Collins, Mary Carol Meinken, and Mike Pankion left the Board. John Jackobs, Vice President of Programing, also ended his term on August 31. Each has contributed greatly to the Guild and I hope that you will join me in thanking them. Newly elected to the Board as Vice President of Programing is Nancy Bowman.

Appointments to positions on the Board include: Bev Connelly – Director of Youth Turning; John Albachten - Director of Skill Development; and KC Kendall - Director of New Member Development. Check the OVWG website to see a list of all Board positions and their occupants. I hope that you will give each a warm welcome and wish them well. One position, Director of Community Development, has not been filled. If you would like to learn more about this position or know of someone who might be interested please contact KC Kendall (Chair of Nomination Committee).

To fully implement the Strategic Plan requires a revision of the By-laws. A draft of the proposed

new By-laws was emailed to the membership in June along with job descriptions of all elected and appointed positions. I asked for feedback on this proposal and have received comments from a few people that have resulted in some changes. Prior to our meeting in September I will re-send these documents with changes, for you to examine. I encourage you to read them and to attend the monthly meeting on September 16, where I will ask for your vote of approval.

One major goal of the Strategic Plan is to provide more opportunities for members to get involved in the operation of the Guild. To help with this we have established ten permanent committees (chaired by Board Members) as follows:

- Program Develop. Com. (VP Program.)
- AV Develop. Com. (VP Facilities & Equip.)
- Facility & Equip. Maint. Com. (VP Facilities& Equip.)
- Skill Develop. Com. (Dir. Skill Develop.)
- New Mem. Develop. Com. (Dir. New Mem. Develop.)
- Communications Com. (Dir. Market.)
- Website Com. (Dir. Market.)
- Youth Turning Com. (Dir. Youth Turning)
- Community Involvement Com. (Dir. Community Involv.)
- Symposium Committee (Symposium Dir.)

These provide opportunities for new members to contribute in many ways while getting to know others in the Guild. Just because you are new to turning doesn't mean that you don't have skills and experiences that may be of great value to the organization. Long-time members can also contribute by sharing their knowledge and experience with other members of all skill levels. As you have been told many times, the work of many hands will lighten the load on everyone.

In closing I want to remind you of the monthly meeting on September 16, 2017. Kimberly Winkle will be our professional demonstrator and she will teach a hands-on class on Sunday, September, 17. Please check the OVWG website to see the details for her demonstration and to register for her hands-on class. I also remind you of "Turning 2017", our biennial symposium scheduled for October 13-15, 2017. This is a great opportunity to see and learn from some of the best woodturners in the country. Registration has been very strong, but you still have time to register for this outstanding event by going to the OVWG website ([www.ovwg.org](http://www.ovwg.org)). If you are registered and want to help please contact John Albachten ([john@agoodturn.com](mailto:john@agoodturn.com)) or KC Kendall ([kckend@gmail.com](mailto:kckend@gmail.com)) to volunteer. I hope to see you at both events.

Jerry Warner, President

## Upcoming/Ongoing Events

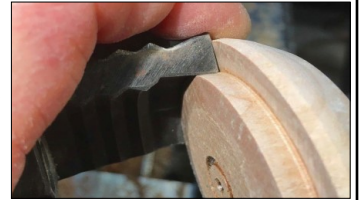
Sep 16, 2017	Kimberly Winkle <a href="#">Kimberly Winkle</a>
Oct 13-15, 2017	Turning 2017
Oct 16-18, 2017	Nick Cook - Three Day Class
Nov 18, 2017	Janice Levi - <a href="http://janicelevi.com">janicelevi.com</a>
Jan 20, 2018	Home Grown Demonstration

## Tips and Information from the AAW

### *The Benefit of a Well Made Tenon* by Jim Piper

Have you ever made a tenon for a scroll chuck only to reverse your bowl and discover it doesn't turn true? If you understand what shape and dimensions are required for a tenon to fit the jaws of your chuck most securely, and then make the tenon accurately, your bowl will turn truer and reduce the time required to retrue it.

Most of my experience is with dovetail jaws. They pull the jaws tight against the base of the tenon as they are tightened around the tenon, which creates the best potential for a true fit. Profile jaws clamp straight in against the tenon compressing the wood with the serrations of the jaws and are less likely to clamp with as much accuracy.



The inside of dovetail jaws, the clamping part, is smaller in diameter around the base of the tenon and larger in diameter around the end of the tenon. When the tenon is properly formed, the larger diameter of the end of the tenon will not pass through the jaws, holding the work securely in the jaws of the chuck.



It is best, when possible, to make the tenon the appropriate diameter to fit the jaws when the chuck is scrolled in nearly all the way. Scroll chuck jaws are manufactured in a completely circular form and then cut into four separate jaws that slide toward the center of the chuck as they tighten around the tenon.

Vicmarc jaws form a perfect circle when there is a 2mm gap between adjacent jaws to allow for the kerf of the saw blade that was used to cut them into four jaws. When cutting a recess in a bowl blank for the outside of dovetail jaws to expand into, make the recess just larger than the jaws when they are completely closed. When the jaws are expanded beyond a true circular form, they will still hold, but your work is more likely to turn true when the jaws make contact completely around the tenon.

**TOTAL EXPERIENCE**   
AAW and chapters together serving members since 1986.

Use the link below to access AAW's video tip about shear scraping featuring Mike Mahoney.

[Video Link](#)

### ***AAW Opportunities:***

AAW Annual Member Exhibition - ***Dia\*Log*** - deadline February 15, 2018

POP Exhibition - ***Out of the Woods - Traditional Form Revisited*** - deadline January 1, 2018

***Pop Artist Showcase*** - Opportunity - deadline December 1, 2017

Visit the AAW website for more information and application procedures.



# Picnic Activities





## Meet the Turner

**Name:** David Morrical

**Occupation:** Retired teacher

**Part of town you live in:** Springfield Township

**How many years have you been turning?** Since 1955 off and on. Didn't really learn how to turn until the 1990's when I became involved with the Tri-State Chapter of the AAW which became the OVWG in 1994.

**How many years have you been a member of OVWG?** Since 1989

**What is your favorite item(s) to turn?** Hollow forms, platters and bowls

**What is your favorite wood and why?** Cherry, maple and walnut, available and free

**Do you have a favorite turning tool?** TV remote, Bowl gouge

**Who/What was your greatest teacher/influence?** John Jordan

**Favorite professional turner you would like to see demonstrate:** I have seen so many of them over the years. Don't know who it would be.

**What was your happiest turning moment?** When I finish something and there aren't any visible scratches. But, I do have cataracts.

**When you look at your turnings, what do you see?** Hopefully, a smooth finish. Nothing real philosophical about my turning just like to see a good shape appear.

**In addition to woodturning, what other crafts/hobbies do you enjoy?** Golf

**Where do you see the world of woodturning going?** More decoration

**Something you would not have known about me:** Gary Brackett, John Farrow, and myself are the only remaining original members from 1988-89 when the club was being formed

**Anything we forgot to ask you:** What is the meaning of life?



# June Contest - Add a Finial to a Turned Piece



John Shannon  
Best of Show



David Wright



Tom Dresch



John Jackobs

## Novice Class



Mike Doran



Nancy Bowman



KC Kendall



Cliff Goosman



Gary Gault

## Advanced Class



Mike Ball



Jerry Warner



Johnny Bowman

## Master Class



Vaughn Solomon

## Show and Tell



Cherry Platter  
KC Kendall



Hollow Form  
David Morrical



Segmented Piece  
Raymond Feltz



Lidded Box  
Nancy Bowman



Cherry Natural Edge  
KC Kendall



Cherry Hollow Form  
Michael Ball



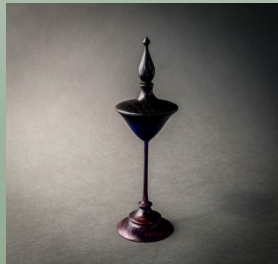
Wooden Figure  
Ed Gerth



Maple Hollow Form  
Ron Hanssen



Ash Bowl  
KC Kendall



Long Stem Piece  
Cliff Goosman



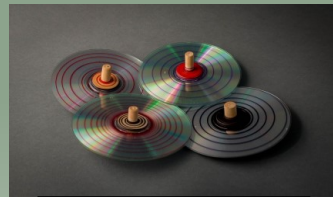
Return My Heart  
Cliff Goosman



Cherry Vase  
Michael Ball



Cherry NE Hollow Form  
Jerry Warner



Computer Disk Tops  
Jamie Donaldson



Segmented Piece  
John Jackobs



Walnut Lidded Box  
Michael Ball

## Educational Opportunities


Plan on taking advantage of the many opportunities to learn from a professional woodturner right here in our Learning Center - Sep 17, Hands-on with Kimberly Winkle : Oct 16-18, 3 day class with Nick Cook : Nov 19, Hands-on with Janice Levi





### Things of Note

- OVWG name tags with a magnetic back are available for \$5 from member Chris Barrett. To get a name tag, send Chris an email at [artisan022@icloud.com](mailto:artisan022@icloud.com), telling him how you want your name to appear. He will have your name tag at a subsequent meeting.
- The OVWG now has **business cards** printed and available for members to be given out and posted at related wood turning businesses. The cards are available in the Learning Center.
- We continue to have opportunities to do demos in many different locales. We have an "approved demonstrator" list that receives an email with a chance to volunteer for demo events. If you would like to be on the approved demonstrator list, please contact Jerry Warner.



**ROCKLER®**  
WOODWORKING AND HARDWARE

**Rockler in Tri-County**  
333 E. Kemper Rd., 513-671-7711  
All OVWG members receive **10% off all**  
purchases (except Festool & SawStop)



**Hank Lynch**  
Store Manager &  
Outside Sales

Edward B. Mueller Company Inc.  
101 East Benson Street  
Cincinnati, Ohio 45215  
Cincinnati: (513) 761-6777  
1-800-642-5656 Ext. 312  
Retail Fax: (513) 761-9945  
Cell: (513) 207-5531  
Email: hank.lynch@muellerco.com  
Website: www.muellerco.com

**ANCHORSEAL**  
\$12 / gallon. This green wood end-sealer is  
available in 1 or 5 gallon containers.

**EXOTIC WOODS**  
BIG MONK LUMBER CO. Turning squares and  
bowl blanks. Afata to Zebrano  
[www.bigmonklumber.com](http://www.bigmonklumber.com)  
Call or email for price list and be sure to stop by  
the table at a meeting.  
Contact: **Pete Kekel**  
859-653-3520  
[2ndnature@fuse.net](mailto:2ndnature@fuse.net)



**WOODCRAFT®**  
Helping You Make Wood Work

513-407-8371  
11711 Princeton Plaza, Suite 271  
Near Tri-County Mall

**SANDING SUPPLIES**  
Available in All Grits. Yellow, Green, Blue,  
White. Abralon. Scotchbrite. Mandrels.  
Interface Pads.  
Any size. Any shape.  
Round, Wavy, Belts, Detail Sanding.  
Jon Hornbach 513-702-2427  
[WoodyMcSander@gmail.com](mailto:WoodyMcSander@gmail.com)



copyright © 2017  
Ohio Valley Woodturners Guild  
Newsletter Editor David Wright  
7203 Timbernoll Drive

OVWG Board of Directors

Elected Officers

President:

859-442-0410

Jerry Warner

jw.warner455@gmail.com

Past President:

513-755-8856

KC Kendall

kckendall@cinci.rr.com

VP of Facilities and Equipment

859-689-5136

Ron Hanssen

rcflyer1954@yahoo.com

VP of Programs

937-239-1980

Nancy Bowman

sgolf11@msn.com

Treasurer:

859-356-3281

Kurt Foglesong

jfoglesong@fuse.net

Secretary:

513-805-8335

David Wright

davidwright@fuse.net

Appointed Positions

Director of Youth Turning:

513-321-2804

Bev Connelly

blcnclm@fuse.net

Director of Skill Development:

513-325-9002

John Albachten

albachj@ucmail.uc.edu

Director of New Member Development:

513-755-8856

KC Kendall

kckendall@cinci.rr.com

Director of Community Development:

Vacant

OVWG Mentors

Do you need help getting started or working out a problem?

Call any of the names listed below. As always, there is **NO**

**CHARGE** to members of the Ohio Valley Woodturners

Guild. We love to share our woodturning passion. Call us,

we want to help you.

Central:

Dave Morrical

513-771-5205

John Albachten

513-325-9002

Mary Carol Meinken

513-521-1517

Dave Kratzer

513-290-9609

Highland County

Nancy Bowman

937-239-1980

Loveland:

John Lannom

513-683-3129

North Side:

K.C. Kendall

513-755-8856

West Chester:

Mike Pankion

513-777-5599

East Side:

Gary Brackett

513-553-7474

Dayton:

Jim Burrowes

937-371-9426

Lowell Converse

937-426-2646

René Keyzer-André

937-277-4717

Tipp City

Gary Vance

937-667-4520

Kentucky:

N. Kentucky

Kurt Foglesong

859-356-3281

Kenton Cnty:

Pete Kekel

859-653-3520

Campbell Cnty:

Keith Bundy

859-781-5414

Indiana:

Southeast:

Gerald Williams

812-689-6545

Contact: KC Kendall, Mentoring Chairperson, with any

changes or if you'd like to join these talented

volunteers.

**Meetings**

Demonstration meetings are generally held the third Saturday of the month (September through June) from  
9:00am to 3:00pm. Registration and set up starts at 8:00am. Meeting cost (includes lunch) is \$10 for  
members and \$15 for nonmembers when there is a professional demonstrator and \$5 for members and  
\$10 for nonmembers for "home grown" demonstrators. Annual membership dues are \$30 (\$25 for AAW  
members) for the first year (includes name badge) and \$25 (\$20 for AAW members) for renewal, payable  
upon joining.